

- Back**
- o PushPull Power
 - o Flat Cable Connectors SEK
 - o *har-mik®*
 - o D-Sub
 - o InduCom

- **Applications**

Product details

09 02 264 6825

Backplane connector

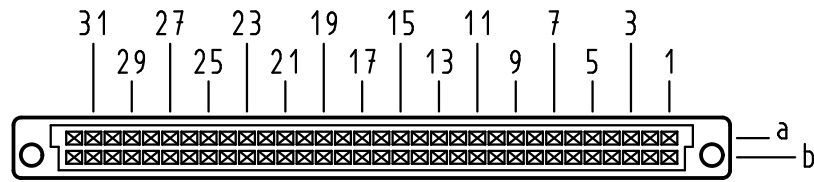
Type	Type B
Standard/Inverse	Standard
Contact gender	Female contacts
Size	Whole size
Number of contacts	64 poles
Contact arrangement	Rows a and b
Termination	Straight solder pins
Termination length	4.5 mm
Performance Class	Performance level 2 as per IEC 60603-2
Contacts	with contacts
Board fixing	Without fixing
Current	2 A max.
Clearance/ Creepage	1.2 / 1.2 mm min.
RoHS compliant	Yes

Inquiry

Available Downloads

Alle Rechte vorbehalten/ All rights reserved

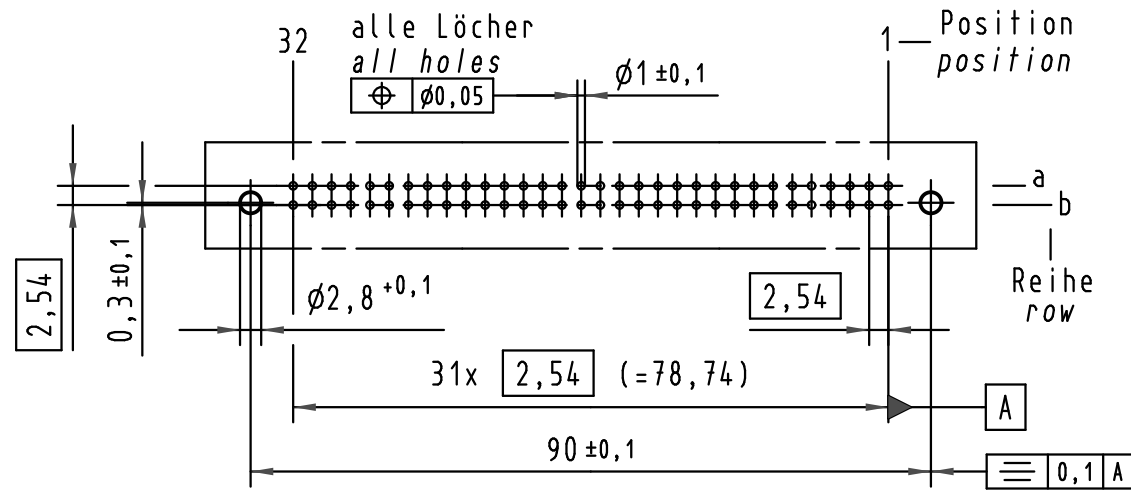
X
Kontaktanordnung
Contact arrangement



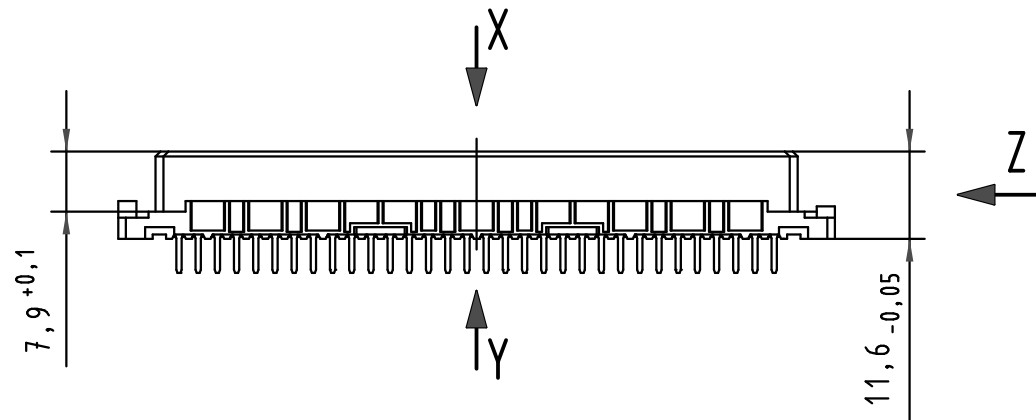
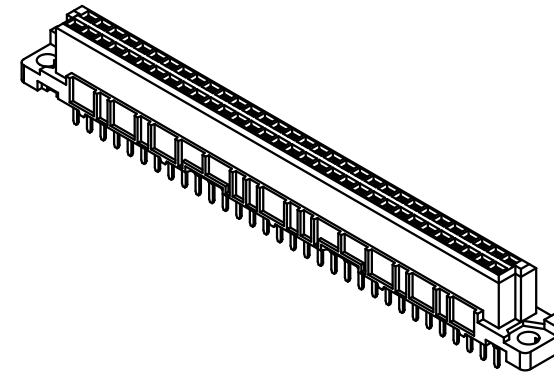
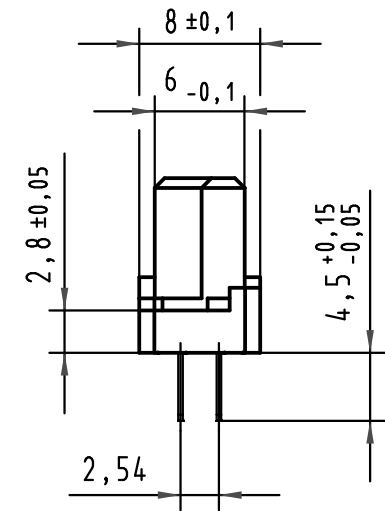
64 Einlöt-Kontakte
64 solder-contacts

- ☒ = Einlöt-Kontakt
= solder-contact
- = Kontaktposition nicht belegt
= position without contact

X
(Lochbild)
(Board drillings)

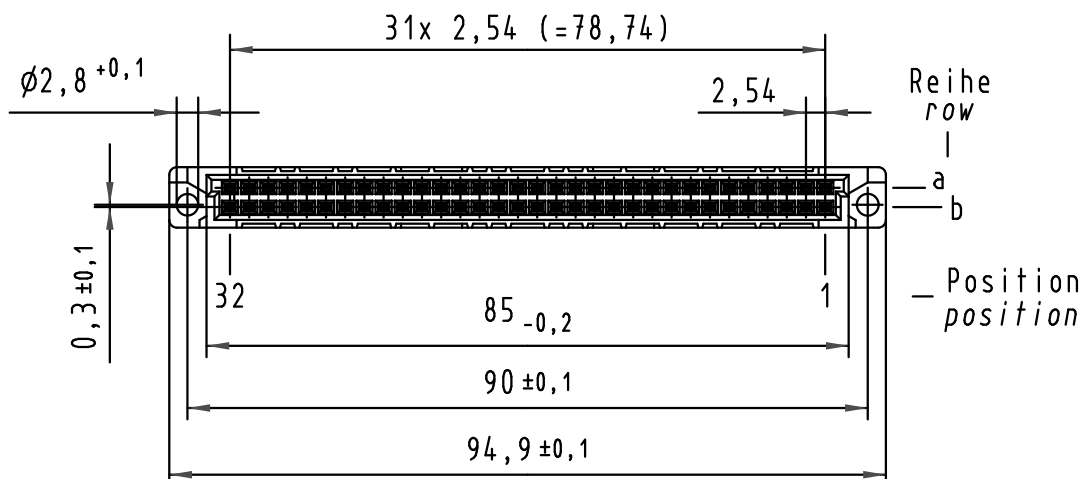
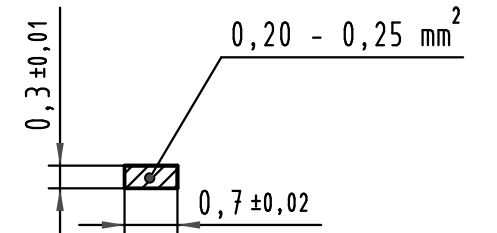


Z
2:1



Y
10:1

Querschnitt der
Lötanschlüsse:
cross-section of
solder terminations:



-	-	-
09 02 264 6825	2	Au über/over Ni
09 02 264 2825	1	Au über/over Ni
Bestell-Nr. part-no.	Anforderungsstufe nach IEC performance level acc.to IEC	Kontaktoberfläche contact plating

All Dimensions in mm Original Size DIN A 3			Techn. Character.			Nicht tolerierte Maßel/Free size tolerances IEC 60603-2		
						har-bus B Federleiste Einlöt 4,5 , 64 pol. har-bus B female connector solder 4,5 , 64 pol.		
			Detail.	12.10.99	Rie.	Maßstab/Scale 1:1 2:1	TB 09 02 264 x825	
			Insp.	12.10.99	Pa.			
34306	02.07.07	LehT	Stand.				Sub.	
30231	08.02.02	Rie.						
26962	24.01.00	Rie.	HARTING Electronics GmbH & Co. KG				Blatt/ page	
26091			D-32339 ESPELKAMP					
Mod.	Dat.	Name						